

PRECISION. RELIABILITY. REPEATABILITY – REDEFINED.



WWW.CYLINDRICALGRINDINGMACHINE.COM

The all-new MMW 600 × 150 mm hydraulic cylindrical grinding machine, engineered for unmatched accuracy and built for the future of Indian manufacturing.

CORE SPECIFICATIONS

Specification	Details
Length Between Centers	600 mm
Height Center	150 mm
Machine Bed	Graded Cast Iron Body
Workhead Drive	AC VFD (0–50 Hz)
Workhead Spindle Taper	MT4
Tailstock Taper	MT3
Wheelhead Motor	5 HP × 1440 RPM
Workhead Motor	1 HP × 1440 RPM
Hydraulic Motor	1 HP × 960 RPM
Wheelhead Spindle	White Metal Brass Type
Wheelhead RPM	1600–2000 RPM
Wheelhead Rapid Approach	40 mm
Coolant Pump	0.15 HP
Tailstock	Rigid, Heavy-Duty
Coating	3-Layer Industrial Finish

ENGINEERING SYSTEMS

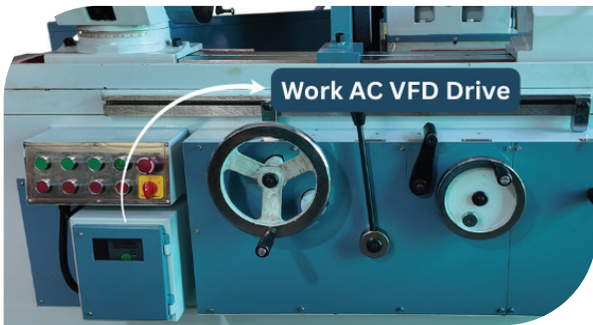
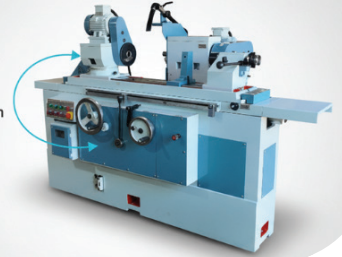
01

Hydraulic Precision

Yuken hydraulic valve system ensures smooth, consistent movement with zero drift.

Hydraulic Precision

Yuken hydraulic valve system ensures smooth, consistent movement with zero drift.



02

Drive Technology

Bharat Bijlee motors & Schinder electrical system guarantee long-life reliability and stable torque output.

03

Accuracy Assured



Repeatability: < 5 micron



Runout: 5 micron



04

Lubrication Architecture

Auto-lubrication system on table slides extends component life and ensures frictionless performance.

PERFORMANCE HIGHLIGHTS



Micron-level repeatability for toolroom & production use



White Metal Brass Spindle:
Silent, durable, consistent



Vibration-damped graded
cast iron base



Rapid approach for efficient
cycle times



Designed for long-term
reliability

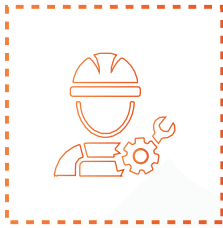
DESIGN & AESTHETICS

Not Just Engineered. Designed to Stand Out.

Our machines are finished with a 3-layer industrial coating, combining protection with a premium look. A machine that performs at this level deserves to look



APPLICATIONS



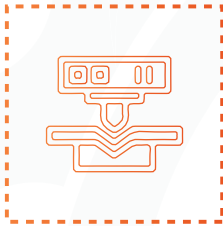
Automotive

Shafts, gears, precision
bushings



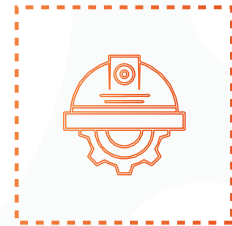
Aerospace

High-accuracy turbine
& rotor parts



Tool & Die

Molds, punches, precision
cutting tools



General Engineering

Rollers, spindles, heavy-duty
cylindrical parts



“Maruti Machine Works –
Engineering India’s Precision Future.”

CONTACT US



Shree Hari Industrial Avenue 1, Opp. Arya Samaj Temple,
Jintan Udyognagar, Surendranagar, Gujarat – 363002



+91 8200403086 | +91 8156057891



shreemarutimachineworks@gmail.com



www.cylindricalgrindingmachine.com



QR SCAN